

PENNSYLVANIA COMPENSATION RATING BUREAU

Claim Frequencies

The attached exhibits examine historical Workers Compensation claim frequencies in Pennsylvania.

Page 1 shows counts of claims and wages as compiled by the Pennsylvania Department of Labor and Industry along with resulting claim frequencies per \$1 million of payroll. Claim counts are available through the twelve months ending June 30, 2010.

Indicated average annual changes in claim frequency are also shown (column (8)) based on an exponential regression for frequencies during the calendar periods shown in column (7). With the exception of 2004, Labor & Industry claim counts showed increases from 2001 through 2007 due to changes in the types of claims certain carriers were reporting. Some improvements in claim frequency are shown in 2007 and later years. The result is that patterns of claim reporting in recent years must be reviewed with great caution.

The second portion of page 1 presents claim frequencies on a fiscal year basis.

The second page shows a graph of the frequencies appearing in column (5) of page 1.

Claim frequencies per \$1 million of expected losses are shown on page 3 based on statistics gathered by the PCRB. For informational purposes, claim frequencies are also shown at constant (1987) wage levels. The data excludes the experience of deductible business.

Staff is proposing an annual change in claim frequency of -6.0%. This is based on a claim frequency trend line of the form  $y=a*b^x$  using the most recent seven points.

The fourth page shows a graph of the frequencies appearing in column (5) of page 3.

The fifth and sixth pages are comparable to pages 3 and 4 but include the experience of deductible policies.

The seventh page shows a graph comparing claim frequencies presented on pages 2, 4 and 6, all indexed to a common value of 1.0 at January 1, 1994.

Page 8 presents the Unit Statistical Plan claim frequencies of page 3 by industry group and page 9 shows a graph of those industry group claim frequencies.

**Pennsylvania W.C. - Injury Frequencies**  
per Department of Labor & Industry Statistics

Calendar Year	Fatal & Non-Fatal Claim Counts (1)	% Change Counts (2)	Wages (Excl. Fed. Govt.) (3)	% Change Wages (4)	Claim Frequency (# per \$1million) (5)	% Change Frequency (6)	Period (7)	Annual % Change in Claim Frequency (8) #
1985	135,258		82,424,929,323		1.6410		CY85 - FY end 6/10	-6.31%
1986	138,168	2.2%	87,088,766,188	5.7%	1.5865	-3.3%	CY86 - FY end 6/10	-6.31%
1987	139,706	1.1%	94,082,048,196	8.0%	1.4849	-6.4%	CY87 - FY end 6/10	-6.27%
1988	146,461	4.8%	101,779,435,543	8.2%	1.4390	-3.1%	CY88 - FY end 6/10	-6.22%
1989	148,445	1.4%	108,000,446,952	6.1%	1.3745	-4.5%	CY89 - FY end 6/10	-6.12%
1990	158,030	6.5%	114,126,673,936	5.7%	1.3847	0.7%	CY90 - FY end 6/10	-5.97%
1991	145,667	-7.8%	116,536,044,622	2.1%	1.2500	-9.7%	CY91 - FY end 6/10	-5.65%
1992	143,268	-1.6%	123,163,218,565	5.7%	1.1632	-6.9%	CY92 - FY end 6/10	-5.30%
1993	136,769	-4.5%	126,453,677,063	2.7%	1.0816	-7.0%	CY93 - FY end 6/10	-4.85%
1994	130,093	-4.9%	131,499,113,452	4.0%	0.9893	-8.5%	CY94 - FY end 6/10	-4.26%
1995	118,313	-9.1%	137,992,970,047	4.9%	0.8574	-13.3%	CY95 - FY end 6/10	-3.53%
1996	102,132	-13.7%	144,910,231,319	5.0%	0.7048	-17.8%	CY96 - FY end 6/10	-2.74%
1997	88,451	-13.4%	154,383,264,744	6.5%	0.5729	-18.7%	CY97 - FY end 6/10	-2.11%
1998	85,783	-3.0%	164,800,517,598	6.7%	0.5205	-9.1%	CY98 - FY end 6/10	-1.85%
1999	82,676	-3.6%	173,807,881,592	5.5%	0.4757	-8.6%	CY99 - FY end 6/10	-1.78%
2000	80,133	-3.1%	181,587,857,121	4.5%	0.4413	-7.2%	CY00 - FY end 6/10	-2.07%
2001	90,405	12.8%	189,076,552,680	4.1%	0.4781	8.3%	CY01 - FY end 6/10	-2.94%
2002	95,206	5.3%	191,748,691,971	1.4%	0.4965	3.8%	CY02 - FY end 6/10	-3.61%
2003	99,161	4.2%	196,855,782,892	2.7%	0.5037	1.5%	CY03 - FY end 6/10	-4.14%
2004	93,566	-5.6%	206,119,193,715	4.7%	0.4539	-9.9%	CY04 - FY end 6/10	-4.46%
2005	102,259	9.3%	214,210,346,697	3.9%	0.4774	5.2%	CY05 - FY end 6/10	-6.51%
2006	110,657	8.2%	225,612,061,600	5.3%	0.4905	2.7%	CY06 - FY end 6/10	-8.76%
2007	115,845	4.7%	237,997,366,771	5.5%	0.4867	-0.8%	CY07 - FY end 6/10	-10.76%
2008	104,275	-10.0%	244,561,264,552	2.8%	0.4264	-12.4%		
2009	88,973	-14.7%	238,327,258,471	-2.5%	0.3733	-12.5%		
2009.5	87,858	-1.3% **	236,445,340,875	-0.8%	0.3716	-0.5%		

Fiscal Year Ending June 30	Fatal & Non-Fatal Claim Counts (1)	% Change Counts (2)	Wages (Excl. Fed. Govt.) (3)	% Change Wages (4)	Claim Frequency (# per \$1million) (5)	% Change Frequency (6)	Period Ending 6/30 (7)	Annual % Change in Claim Frequency (8) #
1996	111,412		141,080,588,470		0.7897		96-10	-3.02%
1997	94,081	-15.6%	148,855,166,710	5.5%	0.6320	-20.0%	97-10	-2.20%
1998	87,339	-7.2%	159,326,932,528	7.0%	0.5482	-13.3%	98-10	-1.68%
1999	83,769	-4.1%	168,545,476,679	5.8%	0.4970	-9.3%	99-10	-1.42%
2000	81,338	-2.9%	178,133,454,425	5.7%	0.4566	-8.1%	00-10	-1.44%
2001	82,813	1.8%	188,197,864,473	5.6%	0.4400	-3.6%	01-10	-1.94%
2002	94,215	13.8%	189,850,330,342	0.9%	0.4963	12.8%	02-10	-2.98%
2003	98,042	4.1%	193,398,561,446	1.9%	0.5069	2.1%	03-10	-3.45%
2004	98,041	0.0%	199,943,996,390	3.4%	0.4903	-3.3%	04-10	-3.68%
2005	92,719	-5.4%	209,858,012,135	5.0%	0.4418	-9.9%	05-10	-4.14%
2006	108,979	17.5%	221,752,445,994	5.7%	0.4914	11.2%	06-10	-7.17%
2007	112,910	3.6%	232,096,746,788	4.7%	0.4865	-1.0%	07-10	-9.18%
2008	114,166	1.1%	241,859,079,598	4.2%	0.4720	-3.0%	08-10	-11.27%
2009	97,184	-14.9%	240,364,004,953	-0.6%	0.4043	-14.3%		
2010	87,858	-9.6%	236,445,340,875	-1.6%	0.3716	-8.1%		

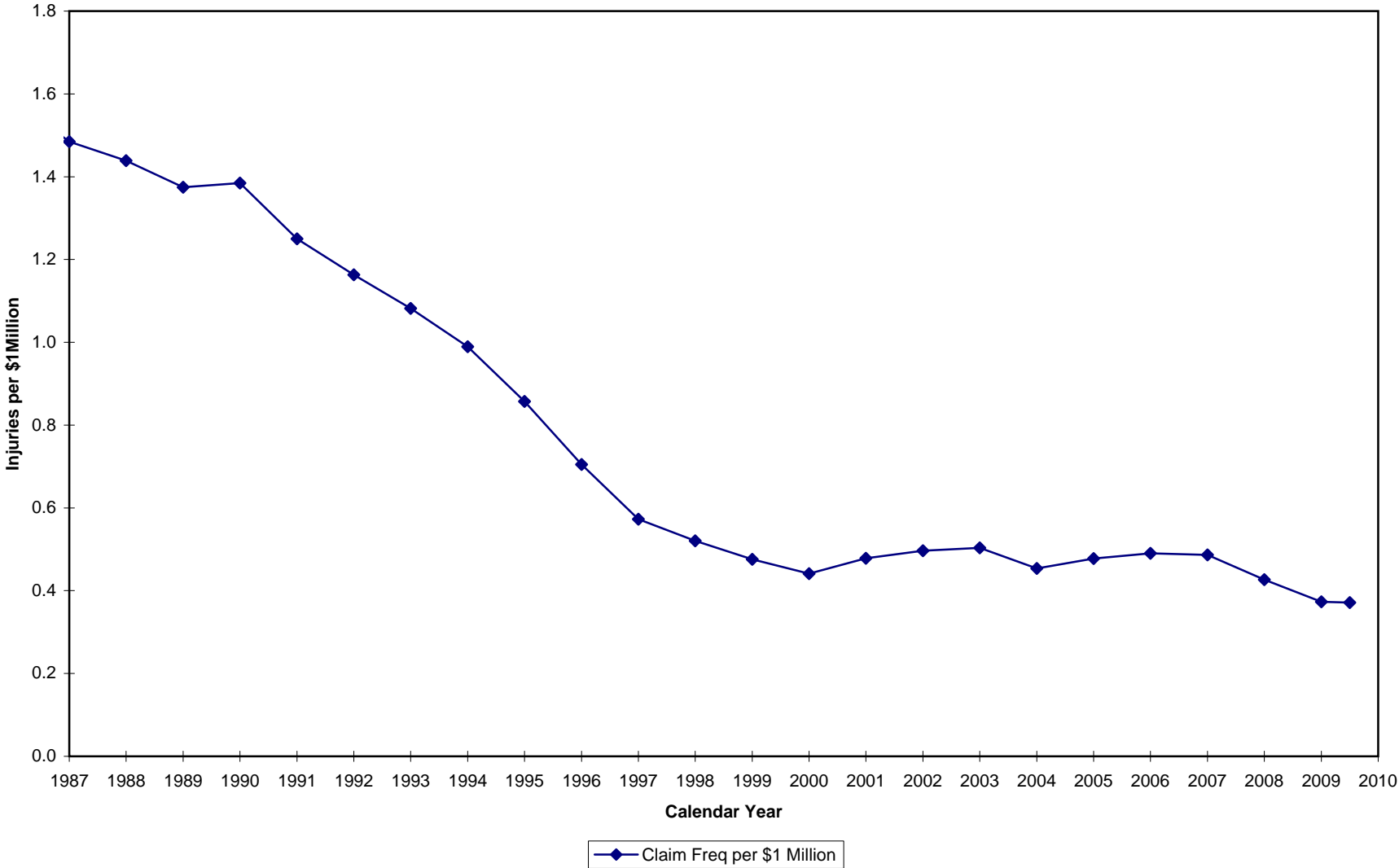
\* July 1, 2009 thru June 30, 2010 .

\*\* Six month change 1/10-12/10 to 7/10-6/11. Annualized changes are-2.6% (Counts), -1.6% (Wages) and -1.0% (Frequency)

# Exponential Trend

@ 1ST Quarter 2000 wages have been adjusted (from 45,317,695,400 to 42,864,043,865) for unusually high wage levels during the period.

**PA W.C. - CLAIM FREQUENCIES**  
per Department of Labor & Industry Statistics



**Pennsylvania W.C - Claim Frequencies**  
 PCRB Unit Statistical Plan  
 (Excluding Deductible Business)

Policy Year	# of Claim Indemnity (1)	% Change Counts (2)	Expected Losses (3)	% Change Exp Loss (4)	Claim Frequency (#Claims per \$1 million) (5)	% Change Claim Freq (6)
1987	78,735					
1988	81,465	3.47%				
1989	82,954	1.83%				
1990	78,202	-5.73%				
1991	69,369	-11.30%				
1992	56,627	-18.37%				
1993	48,000	-15.23%				
1994	42,194	-12.10%	1,073,621,890		39.30	
1995	36,933	-12.47%	1,055,570,585	-1.70%	34.99	-11.00%
1996	35,993	-2.55%	1,131,311,042	7.20%	31.82	-9.10%
1997	37,662	4.64%	1,249,723,314	10.50%	30.14	-5.30%
1998	37,208	-1.21%	1,330,540,862	6.50%	27.96	-7.20%
1999	37,431	0.60%	1,412,457,299	6.20%	26.50	-5.20%
2000	36,087	-3.59%	1,452,331,163	2.80%	24.85	-6.20%
2001	32,285	-10.54%	1,410,174,855	-2.90%	22.89	-7.90%
2002	30,104	-6.76%	1,370,568,129	-2.80%	21.96	-4.10%
2003	27,984	-7.04%	1,389,896,254	1.40%	20.13	-8.30%
2004	27,597	-1.38%	1,445,958,633	4.00%	19.09	-5.20%
2005	26,925	-2.44%	1,525,689,779	5.50%	17.65	-7.50%
2006	26,939	0.05%	1,583,517,313	3.80%	17.01	-3.60%
2007	26,579	-1.34%	1,655,782,315	4.60%	16.05	-5.60%
2008	24,118	-9.26%	1,619,868,810	-2.20%	14.89	-7.20%

Period	Annual % Change In Claim Frequency	Period	Annual % Change In Claim Frequency
PY87-PY08		PY87-PY07	
PY88-PY08		PY88-PY07	
PY89-PY08		PY89-PY07	
PY90-PY08		PY90-PY07	
PY91-PY08		PY91-PY07	
PY92-PY08		PY92-PY07	
PY93-PY08		PY93-PY07	
PY94-PY08	-6.41%	PY94-PY07	-6.46%
PY95-PY08	-6.24%	PY95-PY07	-6.26%
PY96-PY08	-6.16%	PY96-PY07	-6.17%
PY97-PY08	-6.16%	PY97-PY07	-6.18%
PY98-PY08	-6.13%	PY98-PY07	-6.13%
PY99-PY08	-6.13%	PY99-PY07	-6.14%
PY00-PY08	-6.07%	PY00-PY07	-6.06%
PY01-PY08	-5.96%	PY01-PY07	-5.92%
PY02-PY08	-6.00%	PY02-PY07	-5.96%
PY03-PY08	-5.73%	PY03-PY07	-5.53%
PY04-PY08	-5.75%	PY04-PY07	-5.42%
PY05-PY08	-5.52%	PY05-PY07	-4.64%
PY06-PY08	-6.44%	PY06-PY07	-5.64%
PY07-PY08	-7.23%		

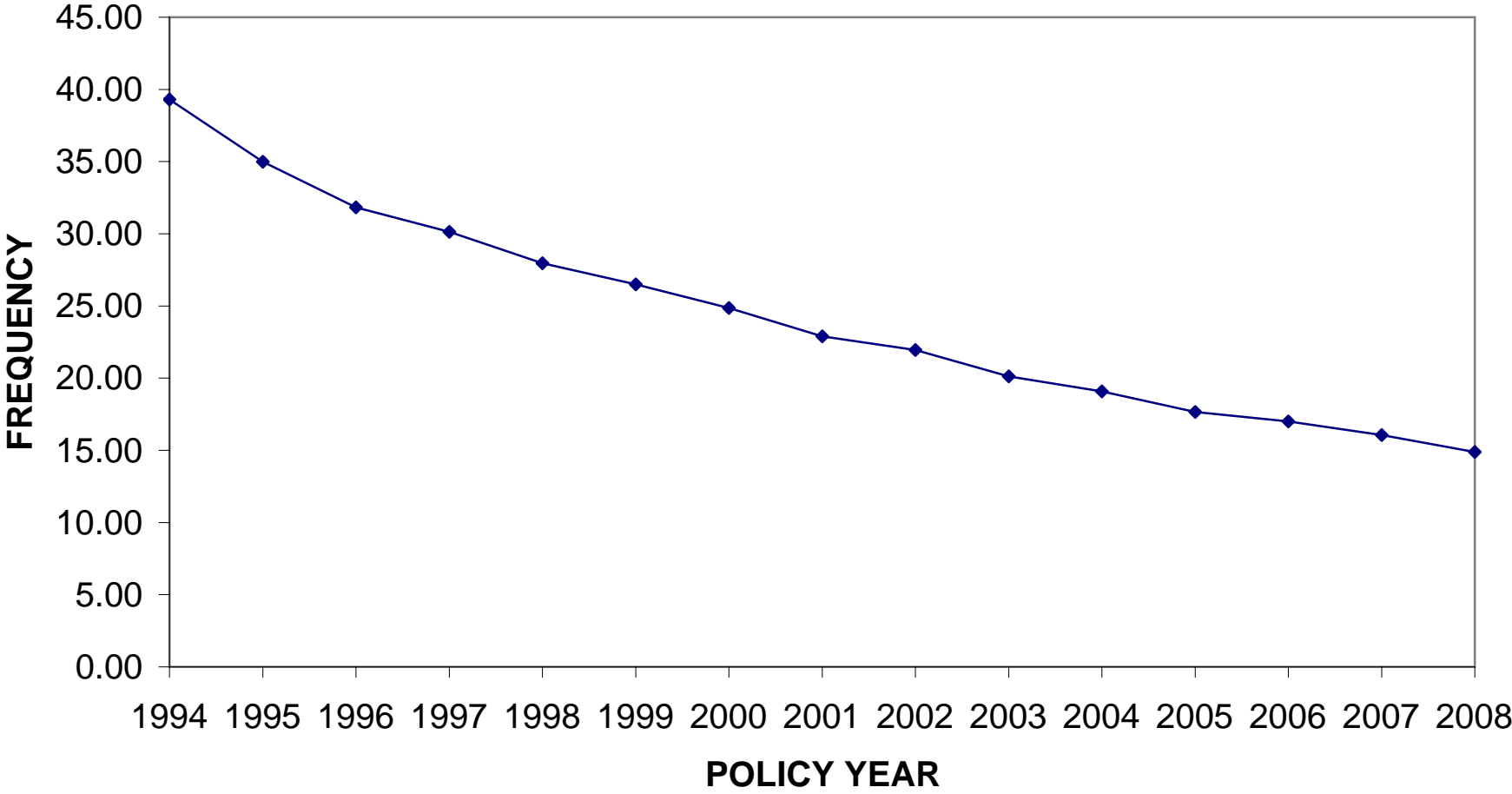
Policy Year	SAWW	% Change SAWW	SAWW Index	Adjusted Claim Frequency * # Claims per \$1 million	% Change Adj Claim Frequency
1987	361		1.0000		
1988	377	4.43%	1.0443		
1989	399	5.84%	1.1053		
1990	419	5.01%	1.1607		
1991	436	4.06%	1.2078		
1992	455	4.36%	1.2604		
1993	475	4.40%	1.3158		
1994	493	3.79%	1.3657	53.67	
1995	509	3.25%	1.4100	49.33	-8.09%
1996	527	3.54%	1.4598	46.44	-5.86%
1997	542	2.85%	1.5014	45.25	-2.56%
1998	561	3.51%	1.5540	43.46	-3.96%
1999	588	4.81%	1.6288	43.16	-0.69%
2000	611	3.91%	1.6925	42.05	-2.57%
2001	644	5.40%	1.7839	40.84	-2.88%
2002	662	2.80%	1.8338	40.28	-1.37%
2003	675	1.96%	1.8698	37.65	-6.53%
2004	690	2.22%	1.9114	36.48	-3.11%
2005	716	3.77%	1.9834	35.00	-4.06%
2006	745	4.05%	2.0637	35.11	0.31%
2007	779	4.56%	2.1579	34.64	-1.34%
2008	807	3.59%	2.2355	33.28	-3.93%

Period	Annual % Change In Adjusted Claim Frequency	Period	Annual % Change in SAWW
PY87-PY08		PY87-PY08	3.78%
PY88-PY08		PY88-PY08	3.73%
PY89-PY08		PY89-PY08	3.68%
PY90-PY08		PY90-PY08	3.64%
PY91-PY08		PY91-PY08	3.62%
PY92-PY08		PY92-PY08	3.59%
PY93-PY08		PY93-PY08	3.57%
PY94-PY08	-3.07%	PY94-PY08	3.57%
PY95-PY08	-2.89%	PY95-PY08	3.58%
PY96-PY08	-2.81%	PY96-PY08	3.57%
PY97-PY08	-2.82%	PY97-PY08	3.56%
PY98-PY08	-2.83%	PY98-PY08	3.51%
PY99-PY08	-2.93%	PY99-PY08	3.41%
PY00-PY08	-2.92%	PY00-PY08	3.35%
PY01-PY08	-2.86%	PY01-PY08	3.30%
PY02-PY08	-2.74%	PY02-PY08	3.48%
PY03-PY08	-2.17%	PY03-PY08	3.77%
PY04-PY08	-1.92%	PY04-PY08	4.06%
PY05-PY08	-1.63%	PY05-PY08	4.12%
PY06-PY08	-2.64%	PY06-PY08	4.08%
PY07-PY08	-3.93%	PY07-PY08	3.59%

\* Adjusted claim frequency is claim frequency per \$1 million expected losses at constant (1987) wages:

Projected Annual Change in Claim Frequency : -6.0% (See PY02-PY08)

**PA W.C. - CLAIM FREQUENCIES**  
**PCRB Unit Statistical Plan (Excl. Deductible Business)**



—◆— Claim Freq per \$1 Million

**Pennsylvania W.C - Claim Frequencies**  
 PCRB Unit Statistical Plan  
 All Business Including Deductible Business

Policy Year	# of Claim Indemnity (1)	% Change Counts (2)	Expected Losses (3)	% Change Exp Loss (4)	Claim Frequency (#Claims per \$1 million) (5)	% Change Claim Freq (6)
1987	78,735					
1988	81,465	3.47%				
1989	82,954	1.83%				
1990	78,202	-5.73%				
1991	69,369	-11.30%				
1992	67,132	-3.22%				
1993	62,118	-7.47%				
1994	58,069	-6.52%	1,486,995,454		39.05	
1995	53,091	-8.57%	1,513,392,049	1.78%	35.08	-10.17%
1996	50,149	-5.54%	1,617,699,249	6.89%	31.00	-11.63%
1997	50,001	-0.30%	1,745,531,461	7.90%	28.65	-7.58%
1998	50,734	1.47%	1,882,206,025	7.83%	26.95	-5.93%
1999	51,786	2.07%	2,032,713,640	8.00%	25.48	-5.45%
2000	51,168	-1.19%	2,122,938,846	4.44%	24.10	-5.42%
2001	47,453	-7.26%	2,140,891,485	0.85%	22.17	-8.01%
2002	45,299	-4.54%	2,132,991,467	-0.37%	21.24	-4.19%
2003	43,720	-3.49%	2,209,892,678	3.61%	19.78	-6.87%
2004	42,780	-2.15%	2,313,957,145	4.71%	18.49	-6.52%
2005	41,699	-2.53%	2,424,061,570	4.76%	17.20	-6.98%
2006	40,753	-2.27%	2,499,375,276	3.11%	16.31	-5.17%
2007	40,880	0.31%	2,655,758,546	6.26%	15.39	-5.64%
2008	36,226	-11.38%	2,532,215,278	-4.65%	14.31	-7.02%

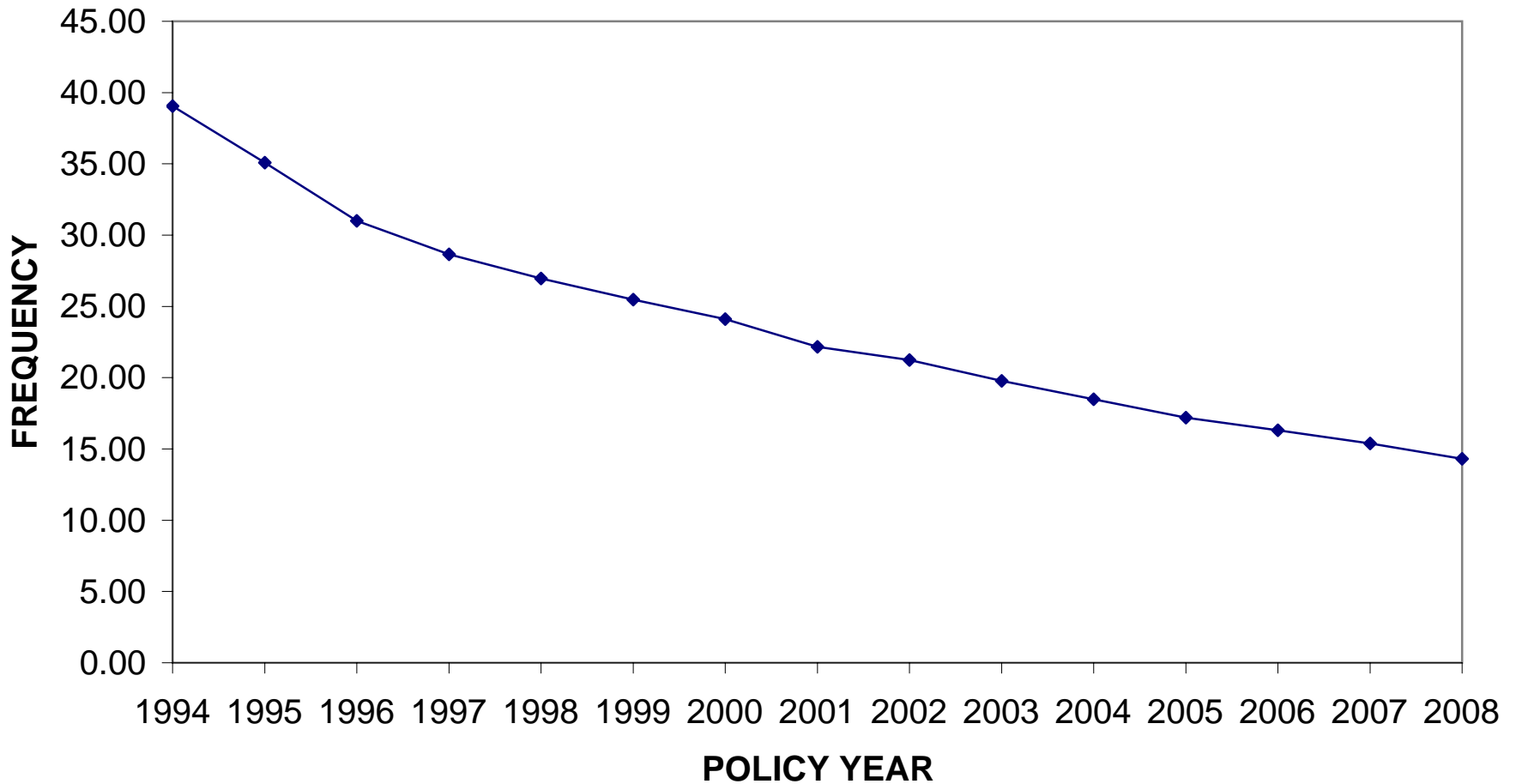
Period	Annual % Change In Claim Frequency	Period	Annual % Change In Claim Frequency
PY87-PY08		PY87-PY07	
PY88-PY08		PY88-PY07	
PY89-PY08		PY89-PY07	
PY90-PY08		PY90-PY07	
PY91-PY08		PY91-PY07	
PY92-PY08		PY92-PY07	
PY93-PY08		PY93-PY07	
PY94-PY08	-6.56%	PY94-PY07	-6.60%
PY95-PY08	-6.34%	PY95-PY07	-6.36%
PY96-PY08	-6.16%	PY96-PY07	-6.15%
PY97-PY08	-6.13%	PY97-PY07	-6.11%
PY98-PY08	-6.16%	PY98-PY07	-6.15%
PY99-PY08	-6.20%	PY99-PY07	-6.19%
PY00-PY08	-6.21%	PY00-PY07	-6.20%
PY01-PY08	-6.14%	PY01-PY07	-6.10%
PY02-PY08	-6.27%	PY02-PY07	-6.26%
PY03-PY08	-6.15%	PY03-PY07	-6.08%
PY04-PY08	-6.05%	PY04-PY07	-5.86%
PY05-PY08	-5.92%	PY05-PY07	-5.41%
PY06-PY08	-6.33%	PY06-PY07	-5.64%
PY07-PY08	-7.02%		

Policy Year	SAWW	% Change SAWW	SAWW Index	Adjusted Claim Frequency * # Claims per \$1 million	% Change Adj Claim Frequency
1987	361		1.0000		
1988	377	4.43%	1.0443		
1989	399	5.84%	1.1053		
1990	419	5.01%	1.1607		
1991	436	4.06%	1.2078		
1992	455	4.36%	1.2604		
1993	475	4.40%	1.3158		
1994	493	3.79%	1.3657	53.33	
1995	509	3.25%	1.4100	49.46	-7.26%
1996	527	3.54%	1.4598	45.25	-8.51%
1997	542	2.85%	1.5014	43.01	-4.95%
1998	561	3.51%	1.5540	41.89	-2.60%
1999	588	4.81%	1.6288	41.50	-0.93%
2000	611	3.91%	1.6925	40.79	-1.71%
2001	644	5.40%	1.7839	39.54	-3.06%
2002	662	2.80%	1.8338	38.94	-1.52%
2003	675	1.96%	1.8698	36.99	-5.01%
2004	690	2.22%	1.9114	35.34	-4.46%
2005	716	3.77%	1.9834	34.12	-3.45%
2006	745	4.05%	2.0637	33.65	-1.38%
2007	779	4.56%	2.1579	33.22	-1.28%
2008	807	3.59%	2.2355	31.98	-3.73%

Period	Annual % Change In Adjusted Claim Frequency	Period	Annual % Change in SAWW
PY87-PY08		PY87-PY08	3.78%
PY88-PY08		PY88-PY08	3.73%
PY89-PY08		PY89-PY08	3.68%
PY90-PY08		PY90-PY08	3.64%
PY91-PY08		PY91-PY08	3.62%
PY92-PY08		PY92-PY08	3.59%
PY93-PY08		PY93-PY08	3.57%
PY94-PY08	-3.22%	PY94-PY08	3.57%
PY95-PY08	-2.99%	PY95-PY08	3.58%
PY96-PY08	-2.81%	PY96-PY08	3.57%
PY97-PY08	-2.79%	PY97-PY08	3.56%
PY98-PY08	-2.88%	PY98-PY08	3.51%
PY99-PY08	-3.00%	PY99-PY08	3.41%
PY00-PY08	-3.07%	PY00-PY08	3.35%
PY01-PY08	-3.05%	PY01-PY08	3.30%
PY02-PY08	-3.01%	PY02-PY08	3.48%
PY03-PY08	-2.61%	PY03-PY08	3.77%
PY04-PY08	-2.24%	PY04-PY08	4.06%
PY05-PY08	-2.05%	PY05-PY08	4.12%
PY06-PY08	-2.51%	PY06-PY08	4.08%
PY07-PY08	-3.73%	PY07-PY08	3.59%

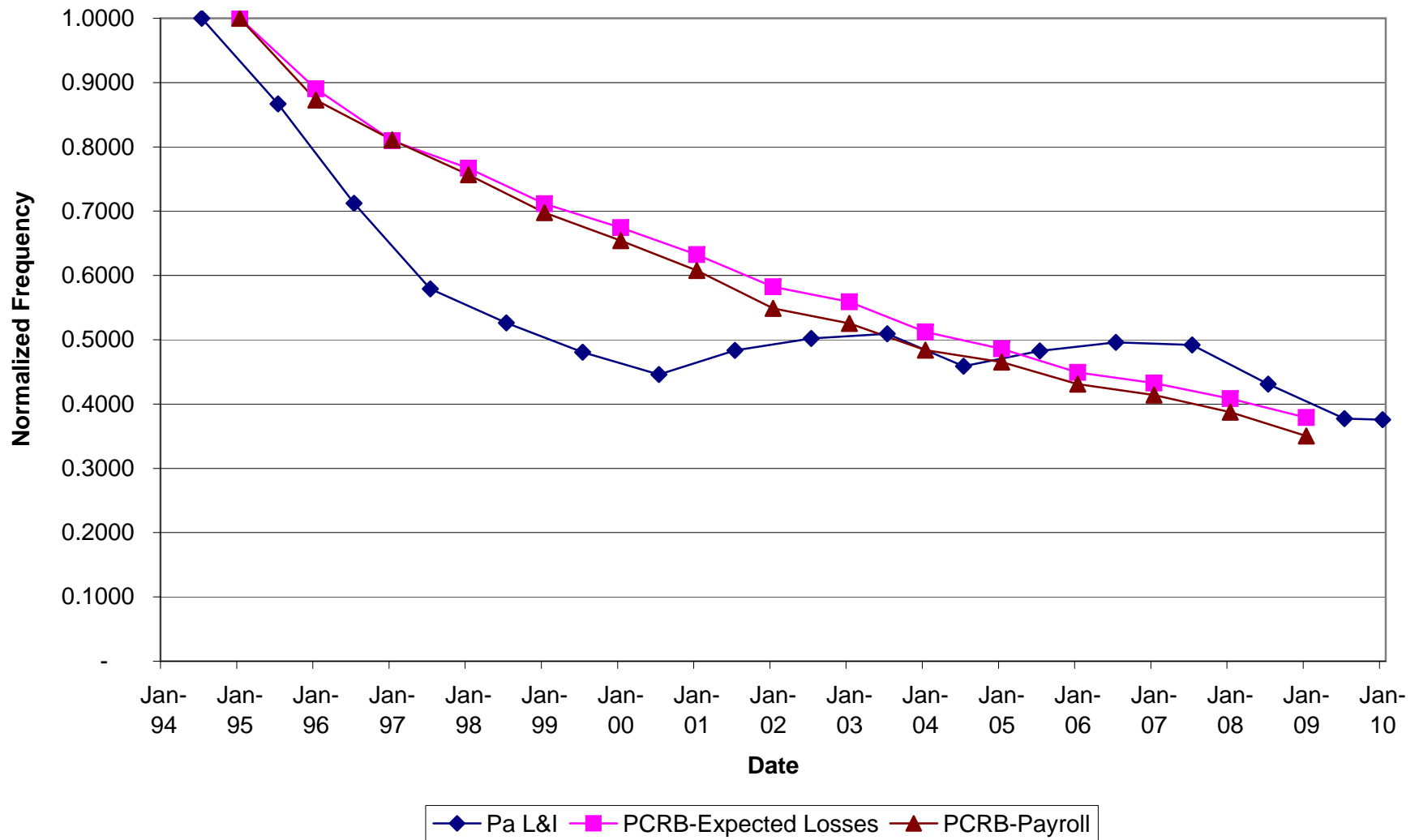
\* Adjusted claim frequency is claim frequency per \$1 million expected losses at constant (1987) wages

**PA W.C. - CLAIM FREQUENCIES**  
**PCRB Unit Statistical Plan (All Business Incl. Deductible Business)**



—◆— Claim Freq per \$1 Million

**PA W.C-COMPARISON OF CLAIM FREQUENCIES  
(PCRB Data Excludes Deductible Business)**





**Pennsylvania W.C. - Claim Frequencies**

PCRB Unit Statistical Plan  
(Excluding Deductible Business)

Policy Year	Industry Group	# of Claim Indemnity (1)	% Change Counts (2)	Expected Losses (3)	% Change Exp Loss (4)	Claim Frequency (#Claims per \$1 million) (5)	% Change Frequency (6)
1987	1 (MFG)	26,756					
1988	1	28,444	6.3%				
1989	1	27,777	-2.3%				
1990	1	25,016	-9.9%				
1991	1	20,535	-17.9%				
1992	1	16,091	-21.6%				
1993	1	13,327	-17.2%				
1994	1	11,571	-13.2%	258,649,843		44.74	
1995	1	9,902	-14.4%	246,629,915	-4.6%	40.15	-10.3%
1996	1	9,242	-6.7%	258,413,053	4.8%	35.76	-10.9%
1997	1	10,092	9.2%	294,095,688	13.8%	34.32	-4.0%
1998	1	9,783	-3.1%	307,662,009	4.6%	31.80	-7.3%
1999	1	9,239	-5.6%	308,910,871	0.4%	29.91	-5.9%
2000	1	8,486	-8.2%	301,038,333	-2.5%	28.19	-5.8%
2001	1	7,136	-15.9%	274,975,981	-8.7%	25.95	-7.9%
2002	1	6,192	-13.2%	260,307,648	-5.3%	23.79	-8.3%
2003	1	5,918	-4.4%	255,740,359	-1.8%	23.14	-2.7%
2004	1	5,990	1.2%	262,586,946	2.7%	22.81	-1.4%
2005	1	5,599	-6.5%	276,295,052	5.2%	20.26	-11.2%
2006	1	5,795	3.5%	286,437,542	3.7%	20.23	-0.1%
2007	1	5,278	-8.9%	291,378,614	1.7%	18.11	-10.5%
2008	1	4,363	-17.3%	269,977,881	-7.3%	16.16	-10.8%

Period	Annual % Change In Claim Frequency
PY87-PY08	
PY88-PY08	
PY89-PY08	
PY90-PY08	
PY91-PY08	
PY92-PY08	
PY93-PY08	
PY94-PY08	-6.4%
PY95-PY08	-6.2%
PY96-PY08	-6.1%
PY97-PY08	-6.2%
PY98-PY08	-6.1%
PY99-PY08	-6.1%
PY00-PY08	-6.1%
PY01-PY08	-6.0%
PY02-PY08	-6.1%
PY03-PY07	-6.9%
PY04-PY08	-7.7%
PY05-PY08	-7.6%
PY06-PY08	-10.6%
PY07-PY08	-10.8%

1987	2 (Contracting)	11,093					
1988	2	11,547	4.1%				
1989	2	11,619	0.6%				
1990	2	10,403	-10.5%				
1991	2	9,019	-13.3%				
1992	2	8,118	-10.0%				
1993	2	7,196	-11.4%				
1994	2	7,201	0.1%	236,244,277		30.48	
1995	2	6,296	-12.6%	230,119,463	-2.6%	27.36	-10.2%
1996	2	6,529	3.7%	249,655,042	8.5%	26.15	-4.4%
1997	2	6,554	0.4%	272,342,121	9.1%	24.07	-8.0%
1998	2	6,724	2.6%	300,212,275	10.2%	22.40	-6.9%
1999	2	6,797	1.1%	323,086,090	7.6%	21.04	-6.1%
2000	2	6,835	0.6%	335,693,381	3.9%	20.36	-3.2%
2001	2	6,420	-6.1%	339,295,365	1.1%	18.92	-7.1%
2002	2	5,936	-7.5%	334,825,025	-1.3%	17.73	-6.3%
2003	2	5,580	-6.0%	341,140,994	1.9%	16.36	-7.7%
2004	2	5,468	-2.0%	357,324,374	4.7%	15.30	-6.5%
2005	2	5,615	2.7%	378,887,598	6.0%	14.82	-3.1%
2006	2	5,349	-4.7%	396,573,439	4.7%	13.49	-9.0%
2007	2	5,267	-1.5%	417,946,993	5.4%	12.60	-6.6%
2008	2	4,347	-17.5%	395,803,386	-5.3%	10.98	-12.9%

PY87-PY08	
PY88-PY08	
PY89-PY08	
PY90-PY08	
PY91-PY08	
PY92-PY08	
PY93-PY08	
PY94-PY08	-6.5%
PY95-PY08	-6.4%
PY96-PY08	-6.5%
PY97-PY08	-6.5%
PY98-PY08	-6.6%
PY99-PY08	-6.7%
PY00-PY08	-7.0%
PY01-PY08	-7.0%
PY02-PY08	-7.2%
PY03-PY07	-7.3%
PY04-PY08	-7.9%
PY05-PY08	-9.2%
PY06-PY08	-9.8%
PY07-PY08	-12.9%

1987	3 (Other)	40,886					
1988	3	41,474	1.4%				
1989	3	43,558	5.0%				
1990	3	42,783	-1.8%				
1991	3	39,815	-6.9%				
1992	3	32,418	-18.6%				
1993	3	27,477	-15.2%				
1994	3	23,422	-14.8%	578,727,770		40.47	
1995	3	20,735	-11.5%	578,821,207	0.0%	35.82	-11.5%
1996	3	20,222	-2.5%	623,242,947	7.7%	32.45	-9.4%
1997	3	21,016	3.9%	683,285,505	9.6%	30.76	-5.2%
1998	3	20,701	-1.5%	722,666,578	5.8%	28.65	-6.9%
1999	3	21,395	3.4%	780,460,338	8.0%	27.41	-4.3%
2000	3	20,766	-2.9%	815,599,449	4.5%	25.46	-7.1%
2001	3	18,729	-9.8%	795,903,509	-2.4%	23.53	-7.6%
2002	3	17,976	-4.0%	775,435,456	-2.6%	23.18	-1.5%
2003	3	16,486	-8.3%	793,014,901	2.3%	20.79	-10.3%
2004	3	16,139	-2.1%	826,047,313	4.2%	19.54	-6.0%
2005	3	15,711	-2.7%	870,507,129	5.4%	18.05	-7.6%
2006	3	15,795	0.5%	900,506,332	3.4%	17.54	-2.8%
2007	3	16,034	1.5%	946,456,708	5.1%	16.94	-3.4%
2008	3	15,408	-3.9%	954,087,543	0.8%	16.15	-4.7%

PY87-PY08	
PY88-PY08	
PY89-PY08	
PY90-PY08	
PY91-PY08	
PY92-PY08	
PY93-PY08	
PY94-PY08	-6.2%
PY95-PY08	-6.0%
PY96-PY08	-5.9%
PY97-PY08	-5.9%
PY98-PY08	-5.8%
PY99-PY08	-5.8%
PY00-PY08	-5.7%
PY01-PY08	-5.5%
PY02-PY08	-5.6%
PY03-PY07	-4.8%
PY04-PY08	-4.3%
PY05-PY08	-3.6%
PY06-PY08	-4.0%
PY07-PY08	-4.7%

## PA W.C. - CLAIM FREQUENCIES BY INDUSTRY GROUP PCRB Unit Statistical Plan (Excl. Deductible Business)

