

PENNSYLVANIA COMPENSATION RATING BUREAU

Claim Frequencies

The attached exhibits examine historical Workers Compensation claim frequencies in Pennsylvania.

Page 1 shows counts of claims and wages as compiled by the Pennsylvania Department of Labor and Industry along with resulting claim frequencies per \$1 million of payroll. Claim counts are available through the twelve months ending June 30, 2011.

Indicated average annual changes in claim frequency are also shown (column (8)) based on an exponential regression for frequencies during the calendar periods shown in column (7). With the exception of 2004, Labor & Industry claim counts showed increases from 2001 through 2007 due to changes in the types of claims certain carriers were reporting. Some improvements in claim frequency are shown in 2007 and later years. The result is that patterns of claim reporting in recent years must be reviewed with great caution.

The second portion of page 1 presents claim frequencies on a fiscal year basis.

The second page shows a graph of the frequencies appearing in column (5) of page 1.

Claim frequencies per \$1 million of expected losses are shown on page 3 based on statistics gathered by the PCRB. For informational purposes, claim frequencies are also shown at constant (1987) wage levels. The data excludes the experience of deductible business.

Staff is proposing an annual change in claim frequency of -5.7%. This is based on a claim frequency trend line of the form $y=a*b^x$ using the most recent seven points.

The fourth page shows a graph of the frequencies appearing in column (5) of page 3.

The fifth and sixth pages are comparable to pages 3 and 4 but include the experience of deductible policies.

The seventh page shows a graph comparing claim frequencies presented on pages 2, 4 and 6, all indexed to a common value of 1.0 at January 1, 1995.

Page 8 presents the Unit Statistical Plan claim frequencies of page 3 by industry group and page 9 shows a graph of those industry group claim frequencies.

Pennsylvania W.C. - Injury Frequencies
per Department of Labor & Industry Statistics

Calendar Year	Fatal & Non-Fatal Claim Counts (1)	% Change Counts (2)	Wages (Excl. Fed. Govt.) (3)	% Change Wages (4)	Claim Frequency (# per \$1million) (5)	% Change Frequency (6)	Period (7)	Annual % Change in Claim Frequency (8) #
1985	135,258		82,424,929,323		1.6410		CY85 - FY end 6/11	-6.2%
1986	138,168	2.2%	87,088,766,188	5.7%	1.5865	-3.3%	CY86 - FY end 6/11	-6.2%
1987	139,706	1.1%	94,082,048,196	8.0%	1.4849	-6.4%	CY87 - FY end 6/11	-6.2%
1988	146,461	4.8%	101,779,435,543	8.2%	1.4390	-3.1%	CY88 - FY end 6/11	-6.1%
1989	148,445	1.4%	108,000,446,952	6.1%	1.3745	-4.5%	CY89 - FY end 6/11	-6.0%
1990	158,030	6.5%	114,126,673,936	5.7%	1.3847	0.7%	CY90 - FY end 6/11	-5.8%
1991	145,667	-7.8%	116,536,044,622	2.1%	1.2500	-9.7%	CY91 - FY end 6/11	-5.5%
1992	143,268	-1.6%	123,163,218,565	5.7%	1.1632	-6.9%	CY92 - FY end 6/11	-5.2%
1993	136,769	-4.5%	126,453,677,063	2.7%	1.0816	-7.0%	CY93 - FY end 6/11	-4.8%
1994	130,093	-4.9%	131,499,113,452	4.0%	0.9893	-8.5%	CY94 - FY end 6/11	-4.3%
1995	118,313	-9.1%	137,992,970,047	4.9%	0.8574	-13.3%	CY95 - FY end 6/11	-3.6%
1996	102,132	-13.7%	144,910,231,319	5.0%	0.7048	-17.8%	CY96 - FY end 6/11	-3.0%
1997	88,451	-13.4%	154,383,264,744	6.5%	0.5729	-18.7%	CY97 - FY end 6/11	-2.5%
1998	85,783	-3.0%	164,800,517,598	6.7%	0.5205	-9.1%	CY98 - FY end 6/11	-2.3%
1999	82,676	-3.6%	173,807,881,592	5.5%	0.4757	-8.6%	CY99 - FY end 6/11	-2.3%
2000	80,133	-3.1%	181,587,857,121 @	4.5%	0.4413	-7.2%	CY00 - FY end 6/11	-2.6%
2001	90,405	12.8%	189,076,552,680	4.1%	0.4781	8.3%	CY01 - FY end 6/11	-3.4%
2002	95,206	5.3%	191,748,691,971	1.4%	0.4965	3.8%	CY02 - FY end 6/11	-4.1%
2003	99,161	4.2%	196,855,782,892	2.7%	0.5037	1.5%	CY03 - FY end 6/11	-4.6%
2004	93,566	-5.6%	206,119,193,715	4.7%	0.4539	-9.9%	CY04 - FY end 6/11	-4.9%
2005	102,259	9.3%	214,210,346,697	3.9%	0.4774	5.2%	CY05 - FY end 6/11	-6.5%
2006	110,657	8.2%	225,612,061,600	5.3%	0.4905	2.7%	CY06 - FY end 6/11	-7.9%
2007	115,845	4.7%	237,997,366,771	5.5%	0.4867	-0.8%	CY07 - FY end 6/11	-8.8%
2008	104,275	-10.0%	244,561,264,552	2.8%	0.4264	-12.4%	CY08 - FY end 6/11	-7.1%
2009	88,973	-14.7%	238,327,258,488	-2.5%	0.3733	-12.5%		
2010	89,951	1.1%	243,186,797,552	2.0%	0.3699	-0.9%		
2010.5 *	85,822	-4.6% **	247,417,018,841	1.7%	0.3469	-6.2%		

Fiscal Year Ending June 30	Fatal & Non-Fatal Claim Counts (1)	% Change Counts (2)	Wages (Excl. Fed. Govt.) (3)	% Change Wages (4)	Claim Frequency (# per \$1million) (5)	% Change Frequency (6)	Period Ending 6/30 (7)	Annual % Change in Claim Frequency (8) #
1996	111,412		141,080,588,470		0.7897		96-11	-3.3%
1997	94,081	-15.6%	148,855,166,710	5.5%	0.6320	-20.0%	97-11	-2.6%
1998	87,339	-7.2%	159,326,932,528	7.0%	0.5482	-13.3%	98-11	-2.2%
1999	83,769	-4.1%	168,545,476,679	5.8%	0.4970	-9.3%	99-11	-2.1%
2000	81,338	-2.9%	178,133,454,425 @	5.7%	0.4566	-8.1%	00-11	-2.2%
2001	82,813	1.8%	188,197,864,473	5.6%	0.4400	-3.6%	01-11	-2.7%
2002	94,215	13.8%	189,850,330,342	0.9%	0.4963	12.8%	02-11	-3.7%
2003	98,042	4.1%	193,398,561,446	1.9%	0.5069	2.1%	03-11	-4.2%
2004	98,041	0.0%	199,943,996,390	3.4%	0.4903	-3.3%	04-11	-4.6%
2005	92,719	-5.4%	209,858,012,135	5.0%	0.4418	-9.9%	05-11	-5.2%
2006	108,979	17.5%	221,752,445,994	5.7%	0.4914	11.2%	06-11	-7.5%
2007	112,910	3.6%	232,096,746,788	4.7%	0.4865	-1.0%	07-11	-8.8%
2008	114,166	1.1%	241,859,079,598	4.2%	0.4720	-3.0%	08-11	-9.7%
2009	97,184	-14.9%	240,364,004,953	-0.6%	0.4043	-14.3%	09-11	-7.4%
2010	87,858	-9.6%	238,144,164,129	-0.9%	0.3689	-8.8%		
2011	85,822	-2.3%	247,417,018,841	3.9%	0.3469	-6.0%		

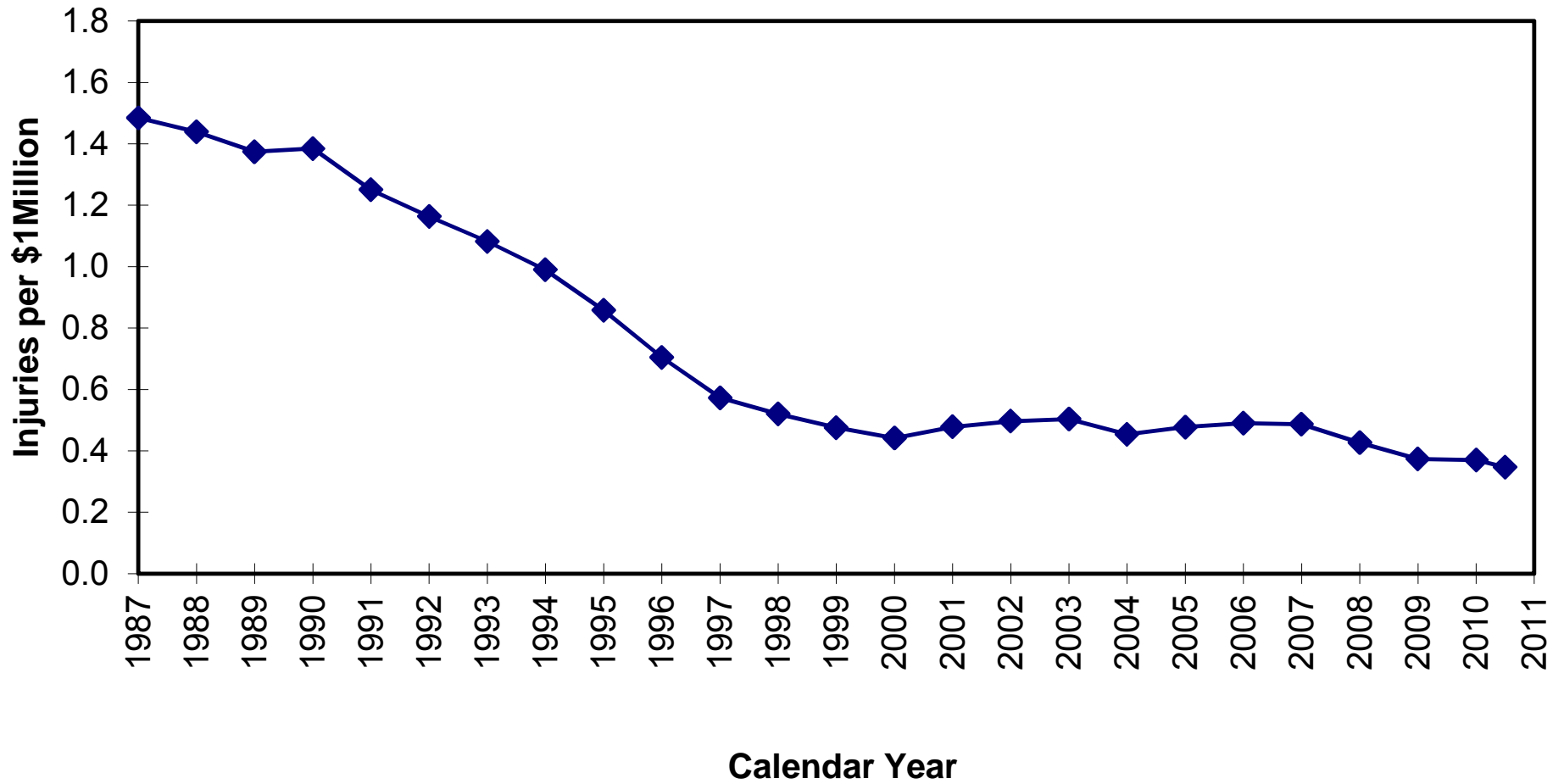
* July 1, 2010 thru June 30, 2011 .

** Six month change 1/11-12/11 to 7/11-6/12. Annualized changes are-9.0% (Counts), +3.4% (Wages) and -12.0% (Frequency)

Exponential Trend

@1ST Quarter 2000 wages have been adjusted (from 45,317,695,400 to 42,864,043,865) for unusually high wage levels during the period.

PA W.C. - CLAIM FREQUENCIES per Department of Labor & Industry Statistics



◆ Claim Freq per \$1 Million

Pennsylvania W.C - Claim Frequencies

PCRB Unit Statistical Plan
(Excluding Deductible Business)

Policy Year	# of Claim Indemnity (1)	% Change Counts (2)	Expected Losses (3)	% Change Exp Loss (4)	Claim Frequency (#Claims per \$1 million) (5)	% Change Claim Freq (6)
1987	78,735					
1988	81,465	3.5%				
1989	82,954	1.8%				
1990	78,202	-5.7%				
1991	69,369	-11.3%				
1992	56,627	-18.4%				
1993	48,000	-15.2%				
1994	42,194	-12.1%				
1995	36,510	-13.5%	1,054,254,367		34.63	
1996	35,646	-2.4%	1,130,674,927	7.2%	31.53	-9.0%
1997	37,288	4.6%	1,247,847,009	10.4%	29.88	-5.2%
1998	36,904	-1.0%	1,332,145,124	6.8%	27.70	-7.3%
1999	37,226	0.9%	1,415,123,835	6.2%	26.31	-5.0%
2000	35,869	-3.6%	1,454,010,301	2.7%	24.67	-6.2%
2001	32,080	-10.6%	1,411,228,071	-2.9%	22.73	-7.9%
2002	29,921	-6.7%	1,371,217,293	-2.8%	21.82	-4.0%
2003	27,810	-7.1%	1,390,280,547	1.4%	20.00	-8.3%
2004	27,380	-1.5%	1,449,806,065	4.3%	18.89	-5.6%
2005	26,714	-2.4%	1,523,063,300	5.1%	17.54	-7.1%
2006	26,746	0.1%	1,585,905,385	4.1%	16.86	-3.9%
2007	26,372	-1.4%	1,658,447,449	4.6%	15.90	-5.7%
2008	24,015	-8.9%	1,637,165,024	-1.3%	14.67	-7.7%
2009	22,254	-7.3%	1,566,070,091	-4.3%	14.21	-3.1%

Period	Annual % Change In Claim Frequency	Period	Annual % Change In Claim Frequency
PY87-PY09		PY87-PY08	
PY88-PY09		PY88-PY08	
PY89-PY09		PY89-PY08	
PY90-PY09		PY90-PY08	
PY91-PY09		PY91-PY08	
PY92-PY09		PY92-PY08	
PY93-PY09		PY93-PY08	
PY94-PY09		PY94-PY08	
PY95-PY09	-6.2%	PY95-PY08	-6.3%
PY96-PY09	-6.1%	PY96-PY08	-6.2%
PY97-PY09	-6.1%	PY97-PY08	-6.2%
PY98-PY09	-6.1%	PY98-PY08	-6.2%
PY99-PY09	-6.1%	PY99-PY08	-6.2%
PY00-PY09	-6.0%	PY00-PY08	-6.1%
PY01-PY09	-5.9%	PY01-PY08	-6.0%
PY02-PY09	-5.9%	PY02-PY08	-6.1%
PY03-PY09	-5.7%	PY03-PY08	-5.8%
PY04-PY09	-5.6%	PY04-PY08	-5.9%
PY05-PY09	-5.4%	PY05-PY08	-5.8%
PY06-PY09	-5.8%	PY06-PY08	-6.7%
PY07-PY09	-5.5%	PY07-PY08	-7.7%
PY08-PY09	-3.1%		

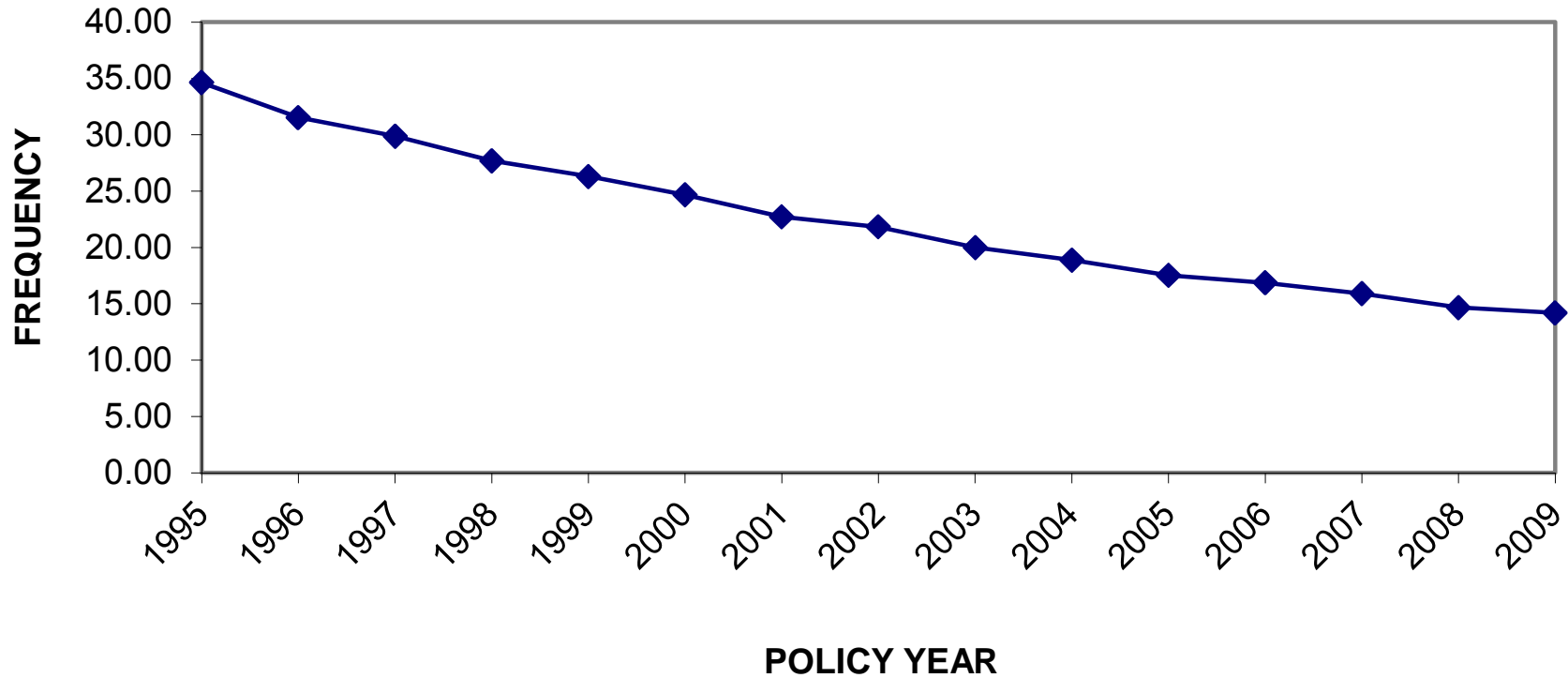
Policy Year	SAWW	% Change SAWW	SAWW Index	Adjusted Claim Frequency * # Claims per \$1 million	% Change Adj Claim Frequency
1987	398.8		1.0000		
1988	418.6	5.0%	1.0498		
1989	436.3	4.2%	1.0940		
1990	455.1	4.3%	1.1414		
1991	474.8	4.3%	1.1906		
1992	492.8	3.8%	1.2357		
1993	509.3	3.3%	1.2771		
1994	526.6	3.4%	1.3207		
1995	542.5	3.0%	1.3605	47.12	
1996	562.0	3.6%	1.4094	44.43	-5.7%
1997	587.5	4.5%	1.4734	44.03	-0.9%
1998	612.3	4.2%	1.5354	42.53	-3.4%
1999	642.1	4.9%	1.6103	42.36	-0.4%
2000	661.4	3.0%	1.6586	40.92	-3.4%
2001	675.3	2.1%	1.6934	38.49	-5.9%
2002	691.4	2.4%	1.7339	37.84	-1.7%
2003	716.4	3.6%	1.7966	35.94	-5.0%
2004	745.6	4.1%	1.8699	35.31	-1.8%
2005	778.3	4.4%	1.9517	34.23	-3.1%
2006	807.1	3.7%	2.0241	34.14	-0.3%
2007	833.5	3.3%	2.0903	33.24	-2.6%
2008	845.5	1.4%	2.1204	31.10	-6.4%
2009	859.9	1.7%	2.1564	30.64	-1.5%

Period	Annual % Change In Adjusted Claim Frequency	Period	Annual % Change in SAWW
PY87-PY09		PY87-PY09	3.6%
PY88-PY09		PY88-PY09	3.6%
PY89-PY09		PY89-PY09	3.5%
PY90-PY09		PY90-PY09	3.5%
PY91-PY09		PY91-PY09	3.5%
PY92-PY09		PY92-PY09	3.5%
PY93-PY09		PY93-PY09	3.5%
PY94-PY09		PY94-PY09	3.4%
PY95-PY09	-3.0%	PY95-PY09	3.4%
PY96-PY09	-2.9%	PY96-PY09	3.4%
PY97-PY09	-3.0%	PY97-PY09	3.3%
PY98-PY09	-3.0%	PY98-PY09	3.2%
PY99-PY09	-3.1%	PY99-PY09	3.2%
PY00-PY09	-2.9%	PY00-PY09	3.2%
PY01-PY09	-2.8%	PY01-PY09	3.3%
PY02-PY09	-2.8%	PY02-PY09	3.3%
PY03-PY09	-2.7%	PY03-PY09	3.1%
PY04-PY09	-2.9%	PY04-PY09	2.9%
PY05-PY09	-3.1%	PY05-PY09	2.5%
PY06-PY09	-3.8%	PY06-PY09	2.1%
PY07-PY09	-4.0%	PY07-PY09	1.6%
PY08-PY09	-1.5%	PY08-PY09	1.7%

* Adjusted claim frequency is claim frequency per \$1 million expected losses at constant (1987) wages

Projected Annual Change in Claim Frequency : -5.7% (See PY03-PY09)

PA W.C. - CLAIM FREQUENCIES
PCRB Unit Statistical Plan (Excl. Deductible Business)



—◆— Claim Freq per \$1 Million

Pennsylvania W.C - Claim Frequencies
 PCRB Unit Statistical Plan
 All Business Including Deductible Business

Policy Year	# of Claim Indemnity (1)	% Change Counts (2)	Expected Losses (3)	% Change Exp Loss (4)	Claim Frequency (#Claims per \$1 million) (5)	% Change Claim Freq (6)
1987	78,735					
1988	81,465	3.5%				
1989	82,954	1.8%				
1990	78,202	-5.7%				
1991	69,369	-11.3%				
1992	67,132	-3.2%				
1993	62,118	-7.5%				
1994	58,069	-6.5%				
1995	52,329	-9.9%	1,508,477,545		34.69	
1996	49,468	-5.5%	1,611,785,999	6.8%	30.69	-11.5%
1997	49,297	-0.3%	1,731,849,213	7.4%	28.46	-7.3%
1998	50,039	1.5%	1,878,889,103	8.5%	26.63	-6.4%
1999	51,214	2.3%	2,031,405,262	8.1%	25.21	-5.3%
2000	50,666	-1.1%	2,114,774,905	4.1%	23.96	-5.0%
2001	47,065	-7.1%	2,139,421,944	1.2%	22.00	-8.2%
2002	44,975	-4.4%	2,128,486,209	-0.5%	21.13	-4.0%
2003	43,377	-3.6%	2,206,704,207	3.7%	19.66	-7.0%
2004	42,314	-2.5%	2,315,032,554	4.9%	18.28	-7.0%
2005	41,244	-2.5%	2,413,212,153	4.2%	17.09	-6.5%
2006	40,258	-2.4%	2,494,506,508	3.4%	16.14	-5.6%
2007	40,376	0.3%	2,656,271,051	6.5%	15.20	-5.8%
2008	36,261	-10.2%	2,585,807,135	-2.7%	14.02	-7.8%
2009	33,852	-6.6%	2,495,135,753	-3.5%	13.57	-3.2%

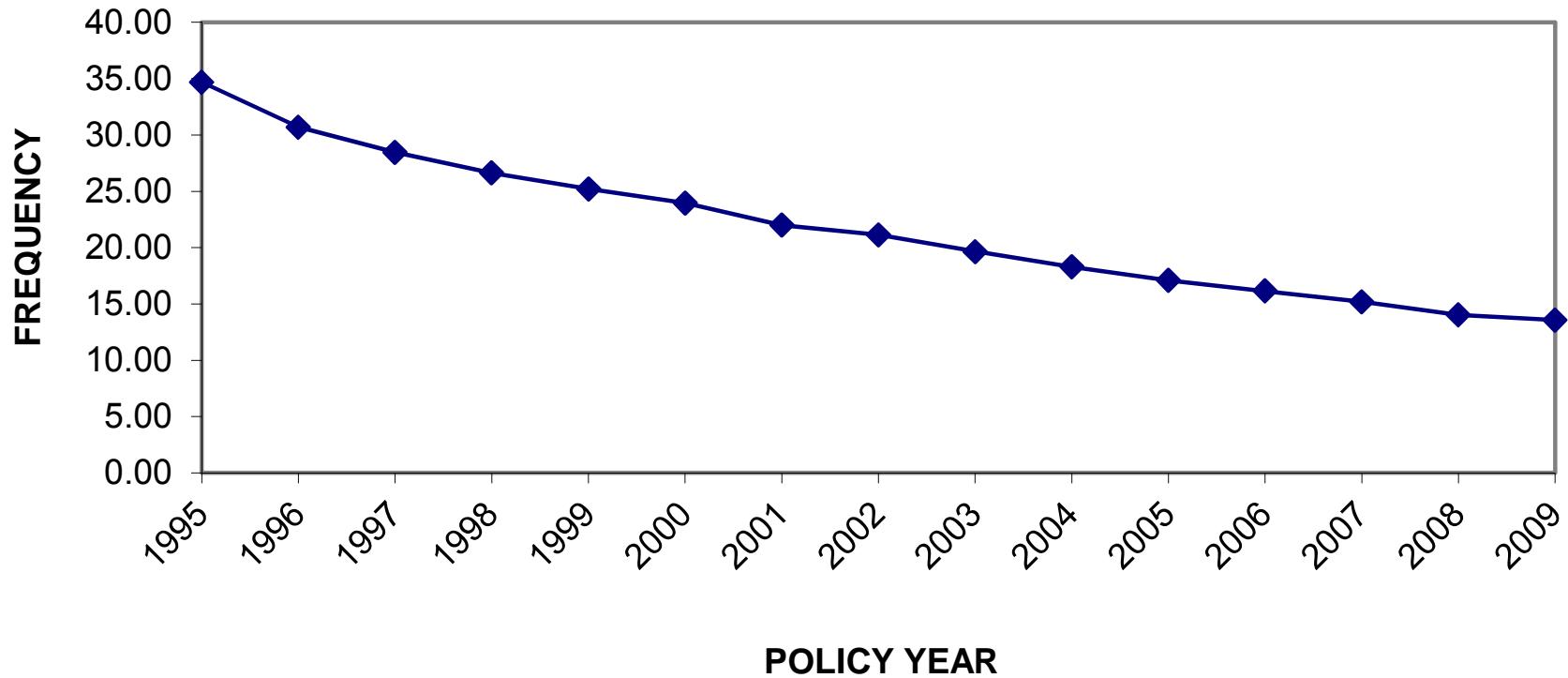
Period	Annual % Change In Claim Frequency	Period	Annual % Change In Claim Frequency
PY87-PY09		PY87-PY08	
PY88-PY09		PY88-PY08	
PY89-PY09		PY89-PY08	
PY90-PY09		PY90-PY08	
PY91-PY09		PY91-PY08	
PY92-PY09		PY92-PY08	
PY93-PY09		PY93-PY08	
PY94-PY09		PY94-PY08	
PY95-PY09	-6.3%	PY95-PY08	-6.4%
PY96-PY09	-6.2%	PY96-PY08	-6.2%
PY97-PY09	-6.1%	PY97-PY08	-6.2%
PY98-PY09	-6.1%	PY98-PY08	-6.2%
PY99-PY09	-6.2%	PY99-PY08	-6.3%
PY00-PY09	-6.2%	PY00-PY08	-6.3%
PY01-PY09	-6.1%	PY01-PY08	-6.3%
PY02-PY09	-6.2%	PY02-PY08	-6.5%
PY03-PY09	-6.1%	PY03-PY08	-6.4%
PY04-PY09	-5.9%	PY04-PY08	-6.3%
PY05-PY09	-5.8%	PY05-PY08	-6.3%
PY06-PY09	-5.8%	PY06-PY08	-6.8%
PY07-PY09	-5.5%	PY07-PY08	-7.8%
PY08-PY09	-3.2%		

Policy Year	SAWW	% Change SAWW	SAWW Index	Adjusted Claim Frequency* # Claims per \$1 million	% Change Adj Claim Frequency
1987	398.8		1.0000		
1988	418.6	5.0%	1.0498		
1989	436.3	4.2%	1.0940		
1990	455.1	4.3%	1.1414		
1991	474.8	4.3%	1.1906		
1992	492.8	3.8%	1.2357		
1993	509.3	3.3%	1.2771		
1994	526.6	3.4%	1.3207		
1995	542.5	3.0%	1.3605	47.20	
1996	562.0	3.6%	1.4094	43.26	-8.3%
1997	587.5	4.5%	1.4734	41.94	-3.1%
1998	612.3	4.2%	1.5354	40.89	-2.5%
1999	642.1	4.9%	1.6103	40.60	-0.7%
2000	661.4	3.0%	1.6586	39.74	-2.1%
2001	675.3	2.1%	1.6934	37.25	-6.3%
2002	691.4	2.4%	1.7339	36.64	-1.6%
2003	716.4	3.6%	1.7966	35.32	-3.6%
2004	745.6	4.1%	1.8699	34.18	-3.2%
2005	778.3	4.4%	1.9517	33.36	-2.4%
2006	807.1	3.7%	2.0241	32.67	-2.1%
2007	833.5	3.3%	2.0903	31.77	-2.8%
2008	845.5	1.4%	2.1204	29.73	-6.4%
2009	859.9	1.7%	2.1564	29.26	-1.6%

Period	Annual % Change In Adjusted Claim Frequency	Period	Annual % Change in SAWW
PY87-PY09		PY87-PY09	3.6%
PY88-PY09		PY88-PY09	3.6%
PY89-PY09		PY89-PY09	3.5%
PY90-PY09		PY90-PY09	3.5%
PY91-PY09		PY91-PY09	3.5%
PY92-PY09		PY92-PY09	3.5%
PY93-PY09		PY93-PY09	3.5%
PY94-PY09		PY94-PY09	3.4%
PY95-PY09	-3.1%	PY95-PY09	3.4%
PY96-PY09	-3.0%	PY96-PY09	3.4%
PY97-PY09	-3.0%	PY97-PY09	3.3%
PY98-PY09	-3.1%	PY98-PY09	3.2%
PY99-PY09	-3.2%	PY99-PY09	3.2%
PY00-PY09	-3.2%	PY00-PY09	3.2%
PY01-PY09	-3.0%	PY01-PY09	3.3%
PY02-PY09	-3.1%	PY02-PY09	3.3%
PY03-PY09	-3.1%	PY03-PY09	3.1%
PY04-PY09	-3.2%	PY04-PY09	2.9%
PY05-PY09	-3.5%	PY05-PY09	2.5%
PY06-PY09	-3.9%	PY06-PY09	2.1%
PY07-PY09	-4.0%	PY07-PY09	1.6%
PY08-PY09	-1.6%	PY08-PY09	1.7%

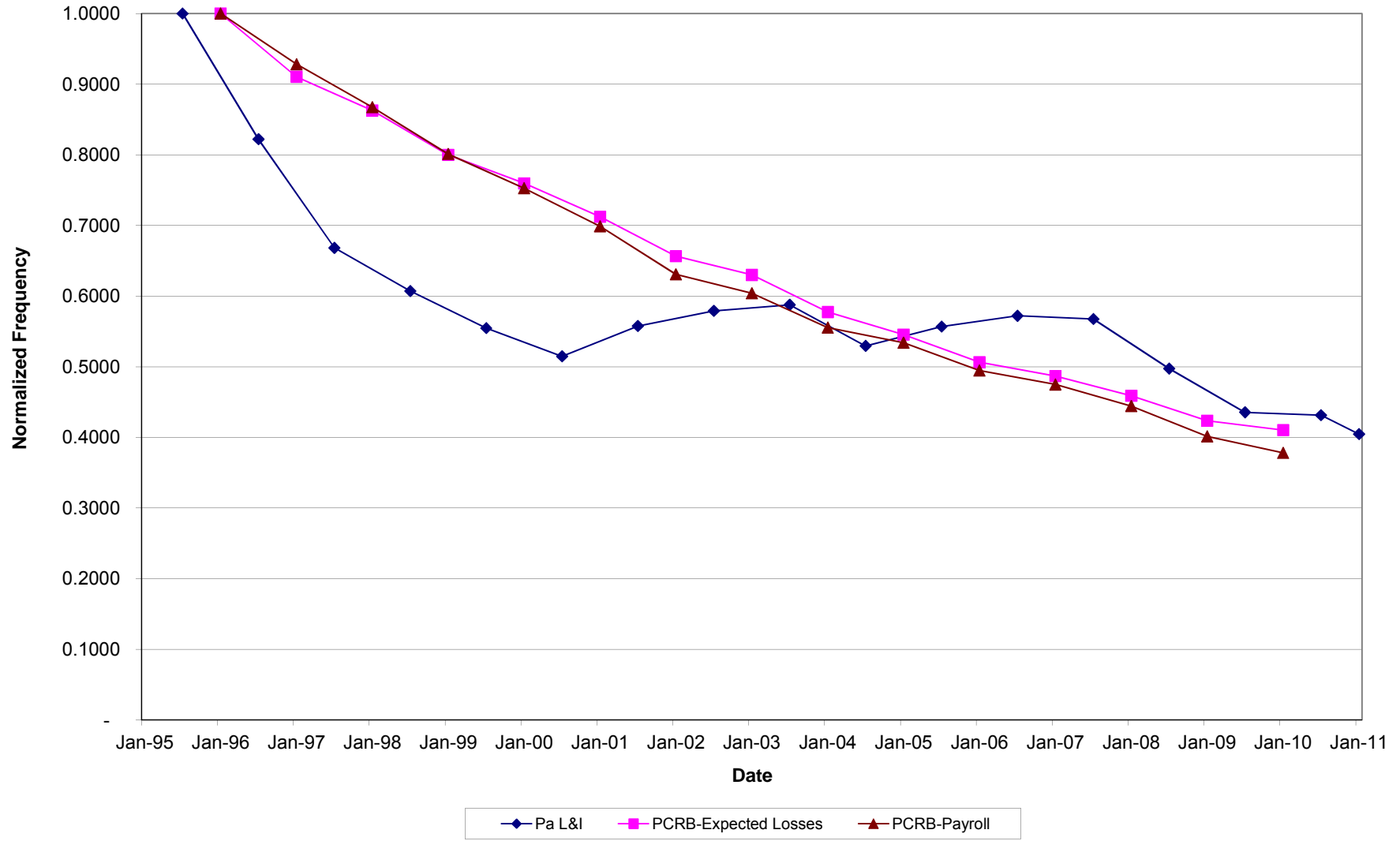
* Adjusted claim frequency is claim frequency per \$1 million expected losses at constant (1987) wages

PA W.C. - CLAIM FREQUENCIES
PCRB Unit Statistical Plan (All Business Incl. Deductible Business)



—◆— Claim Freq per \$1 Million

PA W.C-COMPARISON OF CLAIM FREQUENCIES (PCRB Data Excludes Deductible Business)



Pennsylvania W.C. - Claim Frequencies
 PCRB Unit Statistical Plan
 (Excluding Deductible Business)

Policy Year	Industry Group	# of Claim Indemnity (1)	% Change Counts (2)	Expected Losses (3)	% Change Exp Loss (4)	Claim Frequency (#Claims per \$1 million) (5)	% Change Frequency (6)
1987	1 (MFG)	26,756					
1988	1	28,444	6.3%				
1989	1	27,777	-2.3%				
1990	1	25,016	-9.9%				
1991	1	20,535	-17.9%				
1992	1	16,091	-21.6%				
1993	1	13,327	-17.2%				
1994	1	11,571	-13.2%				
1995	1	9,743	-15.8%	245,617,090		39.67	
1996	1	9,070	-6.9%	257,210,571	4.7%	35.26	-11.1%
1997	1	9,867	8.8%	291,527,806	13.3%	33.85	-4.0%
1998	1	9,587	-2.8%	306,725,451	5.2%	31.26	-7.7%
1999	1	9,102	-5.1%	308,153,456	0.5%	29.54	-5.5%
2000	1	8,344	-8.3%	300,216,543	-2.6%	27.79	-5.9%
2001	1	6,991	-16.2%	274,047,150	-8.7%	25.51	-8.2%
2002	1	6,098	-12.8%	259,459,948	-5.3%	23.50	-7.9%
2003	1	5,797	-4.9%	254,873,095	-1.8%	22.74	-3.2%
2004	1	5,843	0.8%	265,531,208	4.2%	22.00	-3.3%
2005	1	5,517	-5.6%	272,246,390	2.5%	20.26	-7.9%
2006	1	5,691	3.2%	289,406,206	6.3%	19.66	-3.0%
2007	1	5,166	-9.2%	294,128,490	1.6%	17.56	-10.7%
2008	1	4,305	-16.7%	283,133,340	-3.7%	15.20	-13.4%
2009	1	3,744	-13.0%	262,915,702	-7.1%	14.24	-6.3%

Period	Annual % Change In Claim Frequency
PY87-PY09	
PY88-PY09	
PY89-PY09	
PY90-PY09	
PY91-PY09	
PY92-PY09	
PY93-PY09	
PY94-PY09	
PY95-PY09	-6.6%
PY96-PY09	-6.5%
PY97-PY09	-6.6%
PY98-PY09	-6.6%
PY99-PY09	-6.7%
PY00-PY09	-6.8%
PY01-PY09	-6.9%
PY02-PY09	-7.1%
PY03-PY09	-7.8%
PY04-PY09	-8.6%
PY05-PY09	-9.2%
PY06-PY09	-10.5%
PY07-PY09	-9.9%
PY08-PY09	-6.3%

1987	2 (Contracting)	11,093					
1988	2	11,547	4.1%				
1989	2	11,619	0.6%				
1990	2	10,403	-10.5%				
1991	2	9,019	-13.3%				
1992	2	8,118	-10.0%				
1993	2	7,196	-11.4%				
1994	2	7,201	0.1%				
1995	2	6,268	-13.0%	230,445,852		27.20	
1996	2	6,510	3.9%	250,283,051	8.6%	26.01	-4.4%
1997	2	6,548	0.6%	272,882,350	9.0%	24.00	-7.7%
1998	2	6,704	2.4%	300,872,457	10.3%	22.28	-7.2%
1999	2	6,791	1.3%	323,831,686	7.6%	20.97	-5.9%
2000	2	6,825	0.5%	336,581,372	3.9%	20.28	-3.3%
2001	2	6,409	-6.1%	340,150,486	1.1%	18.84	-7.1%
2002	2	5,917	-7.7%	335,522,445	-1.4%	17.64	-6.4%
2003	2	5,573	-5.8%	341,923,643	1.9%	16.30	-7.6%
2004	2	5,462	-2.0%	358,234,170	4.8%	15.25	-6.4%
2005	2	5,589	2.3%	379,508,089	5.9%	14.73	-3.4%
2006	2	5,320	-4.8%	396,431,663	4.5%	13.42	-8.9%
2007	2	5,243	-1.4%	418,297,470	5.5%	12.53	-6.6%
2008	2	4,325	-17.5%	396,735,259	-5.2%	10.90	-13.0%
2009	2	3,701	-14.4%	356,890,489	-10.0%	10.37	-4.9%

PY87-PY09	
PY88-PY09	
PY89-PY09	
PY90-PY09	
PY91-PY09	
PY92-PY09	
PY93-PY09	
PY94-PY09	
PY95-PY09	-6.6%
PY96-PY09	-6.6%
PY97-PY09	-6.7%
PY98-PY09	-6.7%
PY99-PY09	-6.9%
PY00-PY09	-7.1%
PY01-PY09	-7.2%
PY02-PY09	-7.4%
PY03-PY09	-7.5%
PY04-PY09	-8.0%
PY05-PY09	-8.7%
PY06-PY09	-8.7%
PY07-PY09	-9.0%
PY08-PY09	-4.9%

1987	3 (Other)	40,886					
1988	3	41,474	1.4%				
1989	3	43,558	5.0%				
1990	3	42,783	-1.8%				
1991	3	39,815	-6.9%				
1992	3	32,418	-18.6%				
1993	3	27,477	-15.2%				
1994	3	23,422	-14.8%				
1995	3	20,499	-12.5%	578,191,425		35.45	
1996	3	20,066	-2.1%	623,181,305	7.8%	32.20	-9.2%
1997	3	20,873	4.0%	683,436,853	9.7%	30.54	-5.2%
1998	3	20,613	-1.2%	724,547,216	6.0%	28.45	-6.8%
1999	3	21,333	3.5%	783,138,693	8.1%	27.24	-4.3%
2000	3	20,700	-3.0%	817,212,386	4.4%	25.33	-7.0%
2001	3	18,680	-9.8%	797,030,435	-2.5%	23.44	-7.5%
2002	3	17,906	-4.1%	776,234,900	-2.6%	23.07	-1.6%
2003	3	16,440	-8.2%	793,483,809	2.2%	20.72	-10.2%
2004	3	16,075	-2.2%	826,040,687	4.1%	19.46	-6.1%
2005	3	15,608	-2.9%	871,308,821	5.5%	17.91	-8.0%
2006	3	15,735	0.8%	900,067,516	3.3%	17.48	-2.4%
2007	3	15,963	1.4%	946,021,489	5.1%	16.87	-3.5%
2008	3	15,385	-3.6%	957,296,425	1.2%	16.07	-4.7%
2009	3	14,809	-3.7%	946,263,900	-1.2%	15.65	-2.6%

PY87-PY09	
PY88-PY09	
PY89-PY09	
PY90-PY09	
PY91-PY09	
PY92-PY09	
PY93-PY09	
PY94-PY09	
PY95-PY09	-5.8%
PY96-PY09	-5.7%
PY97-PY09	-5.7%
PY98-PY09	-5.6%
PY99-PY09	-5.5%
PY00-PY09	-5.4%
PY01-PY09	-5.2%
PY02-PY09	-5.1%
PY03-PY09	-4.5%
PY04-PY09	-4.1%
PY05-PY09	-3.5%
PY06-PY09	-3.7%
PY07-PY09	-3.7%
PY08-PY09	-2.6%

PA W.C. - CLAIM FREQUENCIES BY INDUSTRY GROUP PCRB Unit Statistical Plan (Excl. Deductible Business)

