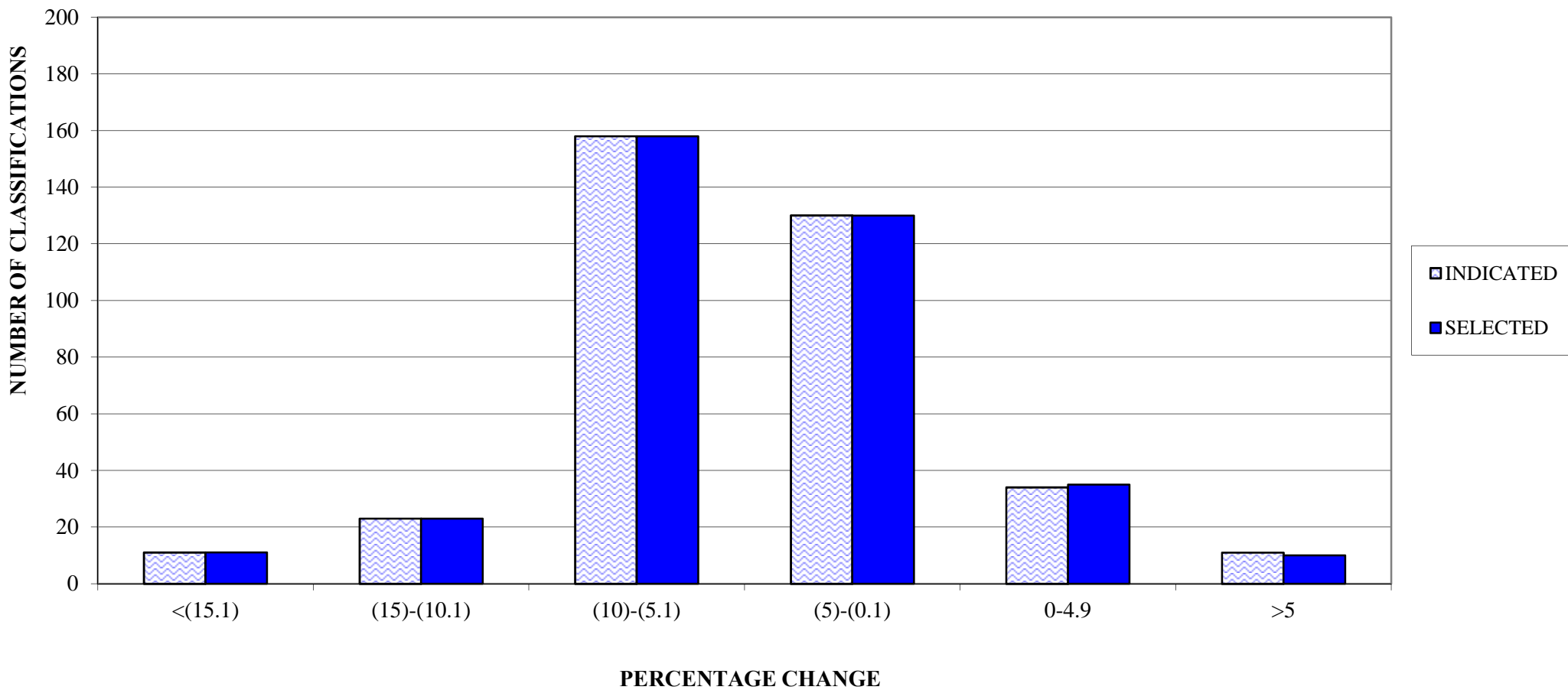


PENNSYLVANIA COMPENSATION RATING BUREAU

Distribution of Loss Cost % Changes

These percent changes are based on pre-surcharge loss costs.

**PENNSYLVANIA COMPENSATION RATING BUREAU**  
**APRIL 1, 2012 LOSS COST FILING**  
**DISTRIBUTION OF LOSS COST PERCENTAGE CHANGES (PRE-SURCHARGE)**



**CLASSES CAPPED AT LOWER BOUND**

CLASS	PRE-CAPPED % CHANGE	POST-CAPPED % CHANGE
416	-31.6%	-29.9%

**CLASSES CAPPED AT UPPER BOUND**

CLASS	PRE-CAPPED % CHANGE	POST-CAPPED % CHANGE
474	44.7%	20.0%
881	4.3%	3.0%