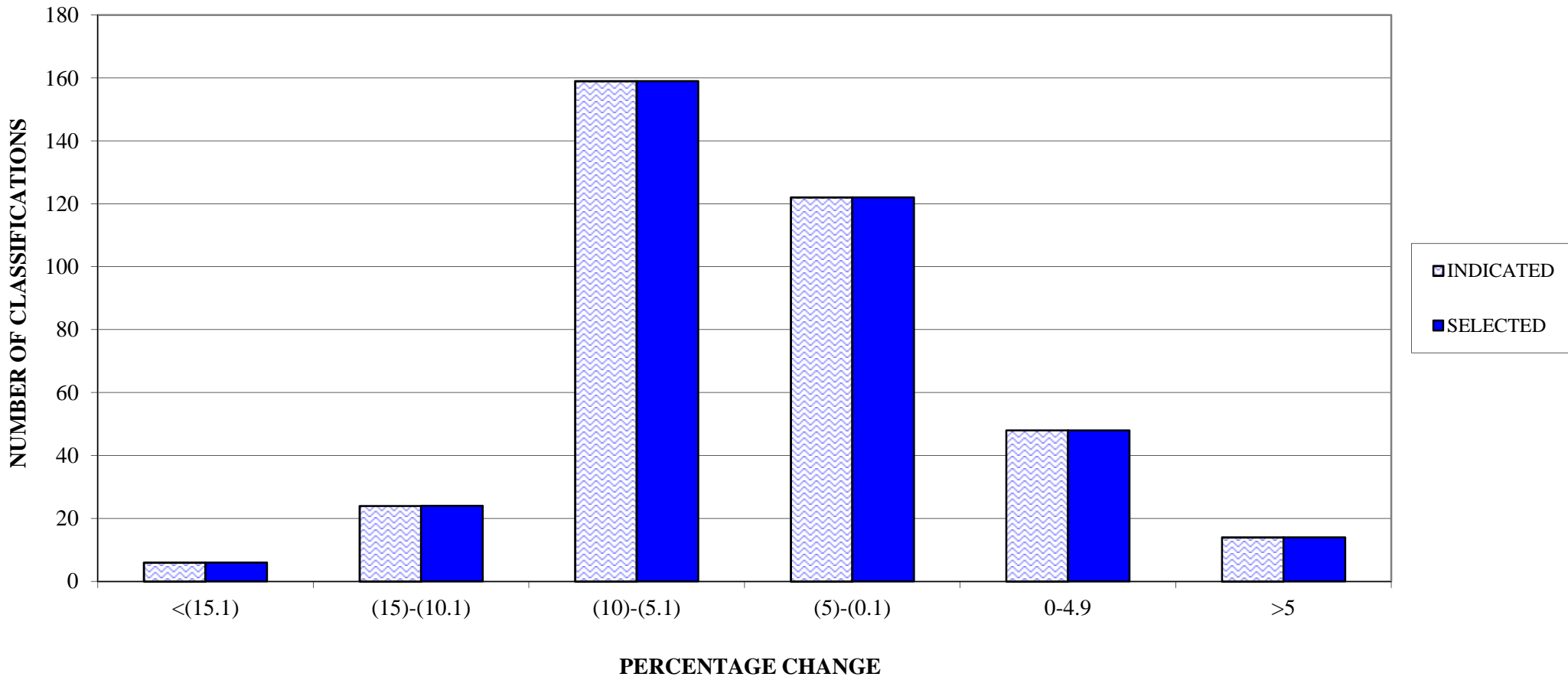


PENNSYLVANIA COMPENSATION RATING BUREAU

Distribution of Loss Cost % Changes

These percent changes are based on pre-surcharge loss costs.

**PENNSYLVANIA COMPENSATION RATING BUREAU**  
**APRIL 1, 2014 LOSS COST FILING**  
**DISTRIBUTION OF LOSS COST PERCENTAGE CHANGES (PRE-SURCHARGE)**



**CLASSES CAPPED AT LOWER BOUND**

CLASS	PRE-CAPPED % CHANGE	POST-CAPPED % CHANGE
956	-38.9%	-27.8%

**CLASSES CAPPED AT UPPER BOUND**

CLASS	PRE-CAPPED % CHANGE	POST-CAPPED % CHANGE
474	24.2%	19.4%